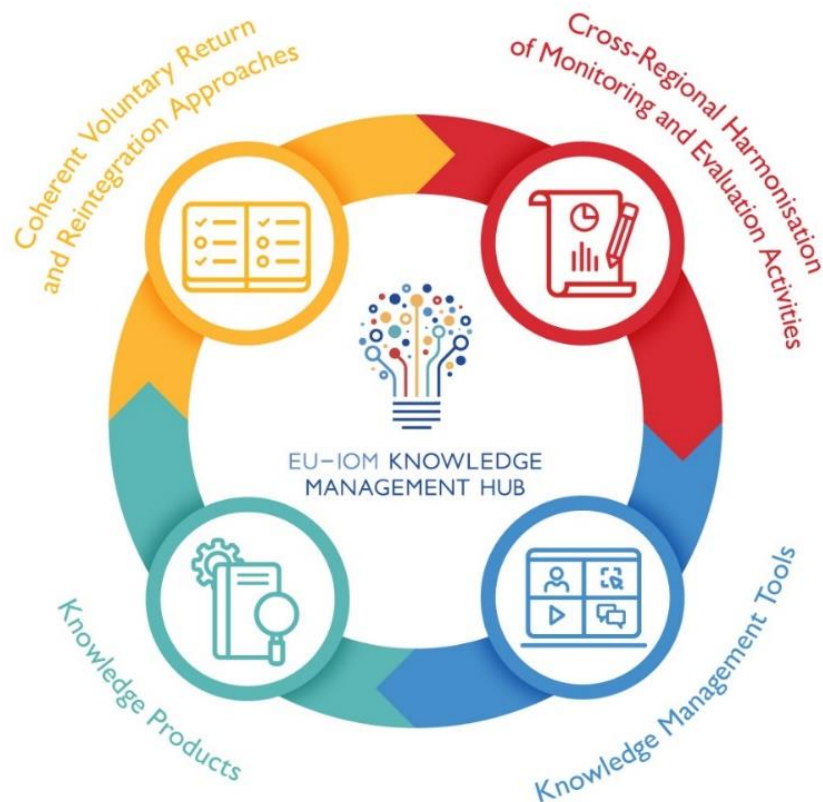




EU-IOM KNOWLEDGE MANAGEMENT HUB

KEY ACHIEVEMENTS 2017 – 2022¹



¹ Unless otherwise specified, covering the period of March 2017 – November 2022.



COMPONENT 1: COHERENT VOLUNTARY RETURN AND REINTEGRATION APPROACHES

- 5 EU-IOM Actions adapted harmonized standard operating procedures (SOPs) for assisted voluntary return and reintegration (AVRR)
- 6 EU-IOM Actions using a common set of harmonized indicators for reporting on dignified return and sustainable reintegration
- IOM's definition to sustainable reintegration and its integrated approach to reintegration increasingly **recognized as a basis for reintegration programming** and being adopted by several countries, including the Governments of Bangladesh, Senegal and Ethiopia



Reintegration training programme

- 57 facilitators trained in 21 countries
- 36 training workshops (blended and in-person) for reintegration practitioners at the regional and national level.
- 1,8316² reintegration practitioners trained in 65 countries using the reintegration training curriculum.
- 886 governmental and non-governmental actors trained in 36 countries through EU-IOM Knowledge Management Hub (KMH) funding.
- 96%³ surveyed stakeholders reporting having applied the knowledge acquired and skills developed or strengthened
- 2,901 trainees enrolled in the e-course on reintegration.

“ IOM’s training on the Integrated Approach to Reintegration was a unique learning experience. We utilize what we learnt from the training in our daily work — including in reintegration project implementation and policy innovations. We received clear guidance on providing integrated reintegration services to returning migrants at individual, community, and structural levels. Most importantly, we are now familiar with the standardized monitoring tools and follow up mechanisms in providing reintegration assistance. ”

—— Zahid Anwar, Deputy Director of the Wage Earners’ Welfare Board in Bangladesh

“ The training of trainers was an amazing experience and a refreshing one learning from all the great minds that joined the meeting. The design and delivery are well tailored to the participants need and the mode of training was very participatory and involving. No one was left out. I applaud the IOM team for the leadership and excellent delivery skills.”

New trained facilitator after training of trainers held between January and March 2022

² This figure refers to the overall number of participants (external and IOM staff) to all training workshops based on the reintegration training curriculum, organized under the KMH and through other projects.

³ 67/70 surveyed stakeholders.



COMPONENT 2: SUPPORTING CROSS-REGIONAL HARMONIZATION OF MONITORING AND EVALUATION (M&E) ACTIVITIES

M&E Tools

- 21 M&E tools, surveys and guidance documentation developed for Return and Reintegration programmes in four different languages (EN, FR, SP and AR).
- The M&E tools developed and/or rolled-out by the KMH have been increasingly recognized by various stakeholders as a blueprint to monitor return and reintegration programmes
- The comprehensive methodology for evaluating the reintegration sustainability has been highlighted in the **“Special Report: EU readmission cooperation with third countries”** released by the European Court of Auditors (ECA)

M&E Training on Return and Reintegration Programmes

- 513 M&E and reintegration practitioners trained
- 48 facilitators trained in 30 countries
- 384 governmental and non-governmental stakeholders trained in 33 countries
- 257 trainees enrolled in the e-course on M&E Return and Reintegration Programmes
- 80%⁴ of surveyed participants reported having applied the knowledge acquired in their work
- 80%⁵ of surveyed participants reported that the expertise gained from this training has enhanced their performance in the execution of their responsibilities.



“ I learned a lot of things that changed some perceptions/ideas I had; so they guided me in my professional choices, and also I learned a valuable lesson that I will always apply in my professional as well as personal life.”

Participant trained between
July and August 2021

“ The learnings from the training has been deployed to collect and organize the refugee data in the camps. Also, conducted the satisfaction survey for understanding the level of satisfaction of the refugees in terms of services that they received and the information that they received.”

Participant trained between November and
December 2022, German Red Cross

⁴ 12 out of 15 participants from the English and French roll outs of the M&E Return and Reintegration training responded to the post-evaluation training that was submitted after three months from the training completion.

⁵ 12 out of 15 participants from the English and French roll outs of the M&E Return and Reintegration training responded to the post-evaluation training that was submitted after three months from the training completion.

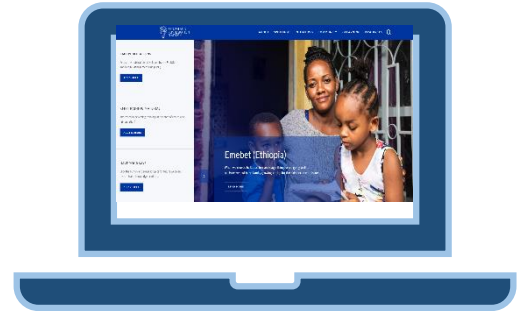
⁶ This feedback was originally shared in French.



COMPONENT 3: SETTING-UP KNOWLEDGE MANAGEMENT TOOLS

Return and Reintegration Platform (RRP)

- Catalyst for [cross-regional and multi-stakeholder cooperation](#) thanks to the public spaces for dialogue offered and its continuously expanding knowledge base.
- Included among the 100 tools of the United Nations Sustainable Development Group (SDG)'s [SDG Acceleration Toolkit](#) as an important tool that helps moving SDG commitments into action
- Acknowledged by the [United Nations Network on Migration](#) (UNMN) through its online channels as well as by the European Commission's Directorate-General for International Partnerships (DG INTPA) as a resourceful tool used for policy, programming and project design purposes
- Fruitful cooperation built with other knowledge management tools such as the [United Nations Development Programme's](#) SparkBlue and the UNMN's Hub
- Reinforced collaborations with research centers and academia (Samuel Hall, Maastricht University, Migration Policy Institute), United Nations agencies (UNICEF) and non-governmental organizations (Save the Children).



- Available in [EN, FR and SP](#)
- Accessed from [180+](#) countries and territories+ [153%](#)⁷ increase of first-time visitors in 2021
- [+ 115%](#)⁸ increase of total pageviews in 2021
- [700+](#) resources shared in the RRP's repository (63% from IOM and 37% from other publishers)
- [1,100+](#) members in the RRP's community of practice
- [100+](#) articles posted in the RRP's spotlight
- [50+](#) reintegration initiatives in the RRP's interactive map
- [20+](#) webinar sessions and cross-regional seminars hosted on the RRP
- [3,300+](#) practitioners and policymakers joining the public events hosted on the RRP

"I have used the [Platform's] content by ensuring that when implementing migrant return and reintegration, necessary steps are followed to ensure the migrant's rights are upheld and that the return and reintegration is satisfactory and beneficial to the migrants themselves."

Feedback from user of the Platform

"Information from the platform has helped in reinforcing knowledge and skills and also helped me learn from others especially on the psychosocial support of migrants, unpacking what sustainable reintegration is on the ground, and involvement of beneficiaries in selecting development initiatives and tailoring training to improve their capacity"

Feedback from user of the Platform

⁷ Over the reporting period December 2019 - January 2022.

⁸ Over the reporting period December 2019 - January 2022.



COMPONENT 4: PRODUCING KNOWLEDGE PRODUCTS

- 9 partner organizations, research institutes, government agencies and academic entities collaborating on knowledge products
- 4 mixed-methods research studies in collaboration with academic and research institutes
- 21 knowledge products developed and published by the KMH
- 11,600+ downloads⁹ of knowledge products published by the KMH
- Findings from KMH knowledge products have been increasingly referenced by other actors, including for instance in the recent Migration Policy Institute report,¹⁰ highlighting the importance of M&E and research efforts for the AVRR programmes and the work undertaken by the KMH, among others.

Latest knowledge products per category type



Research Studies

Knowledge Papers

Knowledge Bites

Good Practice Factsheets

"I wanted to start by thanking the EU-IOM Knowledge Management Team [...] I really want to underline the importance that we attach to the work that you do, to the products that you produce, share and disseminate and to provide opportunities to discuss around. I think this is a very joy for us and it is very useful for us in our work."

Ms. Camilla Hagström (Deputy Head of Unit, DG INTPA G6 - Migration and Forced Displacement, European Commission) - Fostering and strengthening interlinkages between sustainable

⁹ Figure available from November 2020 onwards.

¹⁰ [Putting Migrant Reintegration Programs to the Test: A Road Map to a Monitoring System | Return and Reintegration Platform \(iom.int\)](#)