



EU-IOM KNOWLEDGE
MANAGEMENT HUB

8 December / décembre 2022

1pm - 3pm (CET)

Event

Building evidence and harmonizing approaches on reintegration: lessons from KMH

Événement

Construire une approche harmonisée de la
réintégration fondée sur des données factuelles :
leçons du KMH



Project funded by the European Union
Project implemented by IOM

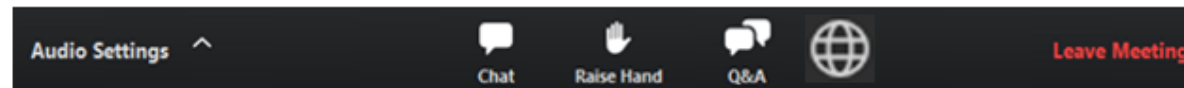


 **IOM**
UN MIGRATION

BEFORE WE START

Avant de commencer

- ✓ If you have any technical issue during the seminar, contact us at ReturnReintegrationPlatform@iom.int
- ✓ **Simultaneous interpretation** is available in **English and French**. Click the [logo below](#) to select the different language channels.



- ✓ Leave your comments in the chat throughout the session by using the **chat function** (send messages to “Everyone”).
- ✓ This session will be **recorded** and made available on the *Return and Reintegration Platform*.



Moderator
Modératrice

Camille Le Coz

Senior Policy Analyst,
Migration Policy Institute

Welcome from the KMH

Bienvenue par le KMH



Aleksandra Izydorczyk

Programme Manager, IOM



Yitna Getachew

Head, Protection Division,
IOM



Camilla Hagström

Deputy Head of Unit, DG
INTPA G6 - Migration and
Forced Displacement,
European Commission

Discussing / Échangeant sur:

Opening Session: The role of the KMH in the evolving RR landscape

*Session d'ouverture : Le rôle du KMH dans le paysage
évolutif du RR*



Anna Lucia Colleo

Independent Migration
Expert



Reem Eldwwari

National Programme Officer,
IOM Sudan

Discussing / Échangeant sur:

Session 1: Impact from the KMH initiative across regions

*Session 1 : Impact de l'initiative KMH à travers les
régions*



Anna Lucia Colleo

Independent Migration
Expert

Presenting / Présentant :

Presentation of key findings from KMH Final External Evaluation

Présentation des principales conclusions de l'évaluation externe finale du KMH

Focus of the evaluation

The evaluation has specifically considered whether the KMH:

1. Remains relevant in the current Return and Reintegration landscape
2. Contributed to more harmonized Return and Reintegration actions
3. Fostered a global Community of Practice on Return and Reintegration

1. Relevance in the current context

- Sustainable reintegration remains an in-development domain of intervention
- Still needed support to concerned international and local stakeholders in the EU partner countries
- Persisting need to look beyond the delivery of assistance to returning migrants and support reintegration as part of
 - the local institutional and support system
 - long-term development efforts

2. Contributions to harmonization of actions

- *Generative collaboration with IOM Field Offices*
 - Field/HQs dialogue to adapt tools
 - Respond to field needs
- *Support to stakeholders outside IOM*
 - Outreach to country stakeholders through IOM Field Offices
- *Feeding a sound learning process*
 - Partnerships with academia and research centers
 - Field data feeding knowledge products
 - Aiming to actionable inputs

3. Feeding a Community of Practice

- Positioning of KMH Return and Reintegration Platform as the key global reference on existing practices and evidence-based knowledge products
- Return and Reintegration Platform regularly consulted by an increasing number of stakeholders (IOs, EU, in the partner countries)
- Excellent management of contacts and dissemination capacity
- Increasing number of participants in webinars, events, ... promoted and organized through the Platform
- General inclination of participants to remain engaged and subscribe to more opportunities



Anna Lucia Colleo

Independent Migration
Expert



Reem Eldwwari

National Programme Officer,
IOM Sudan

Discussing / Échangeant sur:

Session 1: Impact from the KMH initiative across regions

*Session 1 : Impact de l'initiative KMH à travers les
régions*



Nassim Majidi

Founder and Executive
Director, Samuel Hall



Guy-Magloire Tenin

Deputy Director, Monitoring of
Reintegration Actions, Ministry of
Foreign Affairs, Cote d'Ivoire



Rose Borland

Head of Return and
Reintegration Unit, IOM



Stine Hyldekjaer

Programme Manager and Policy
Officer, DG INTPA G6 - Migration and
Forced Displacement, European
Commission

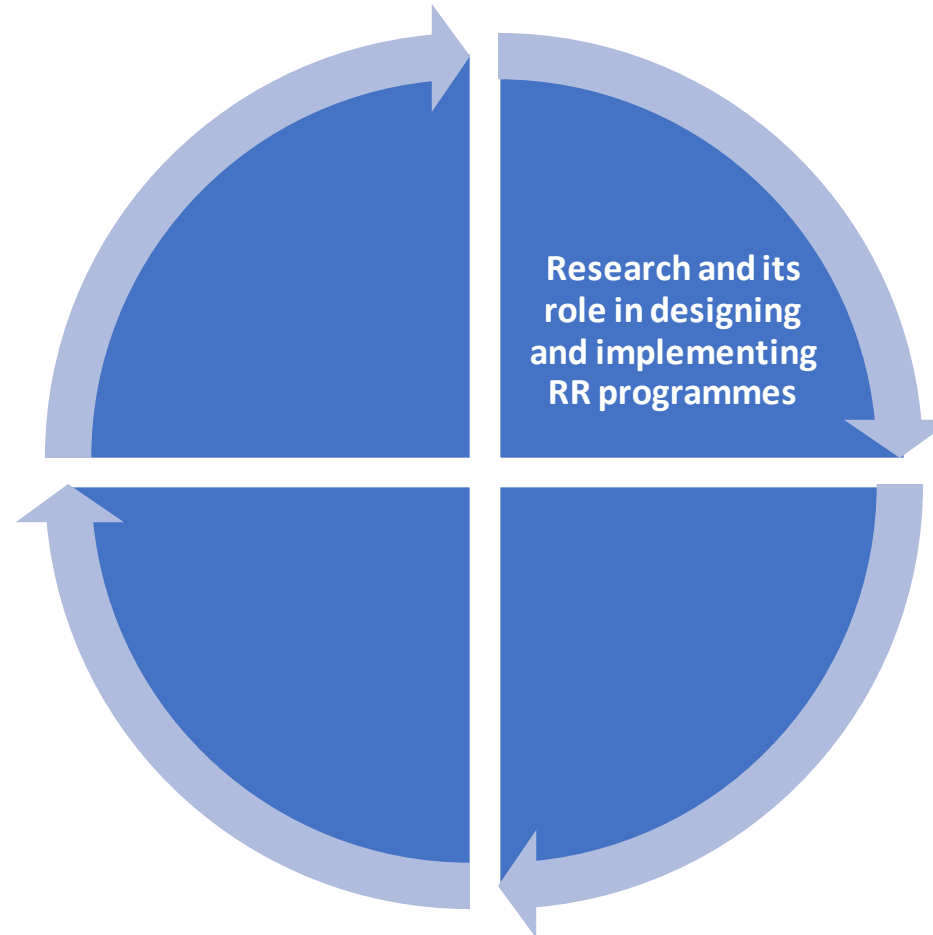
Discussing / Échangeant sur:

Session 2: KMH legacy: informing future programming

Session 2 : L'héritage du KMH : informer la programmation future

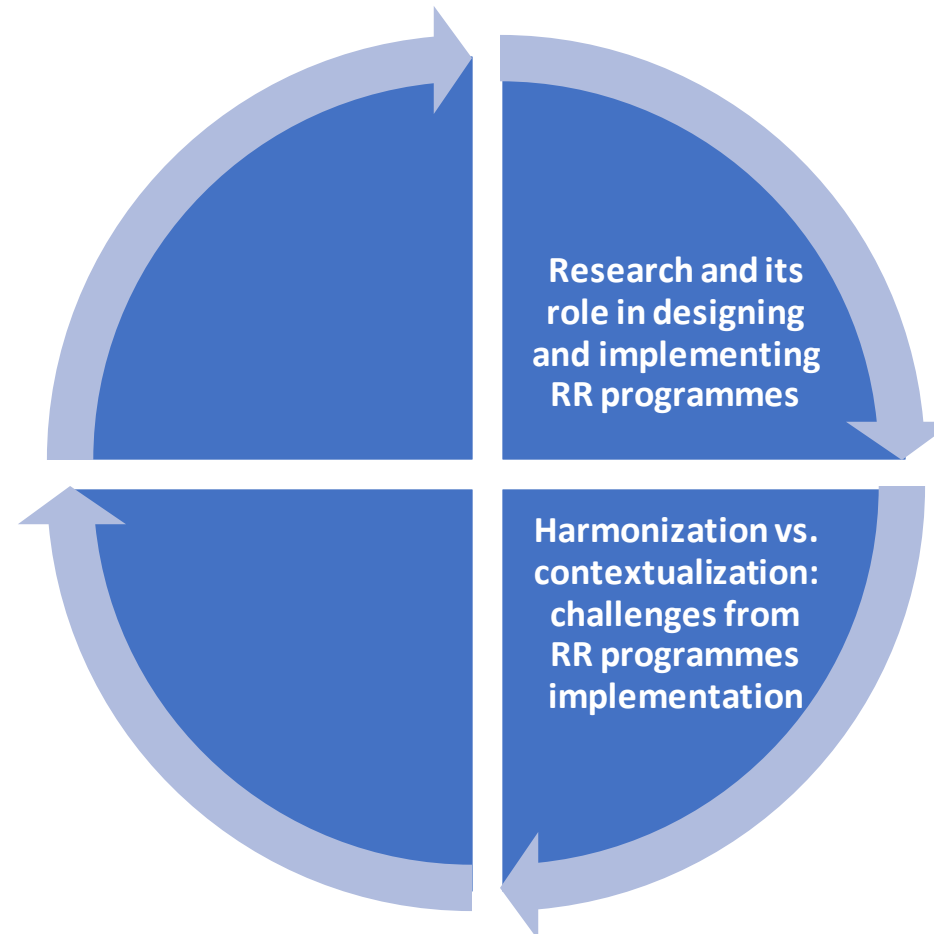
Session 2: KMH legacy: informing future programming

Session 2 : L'héritage du KMH : informer la programmation future



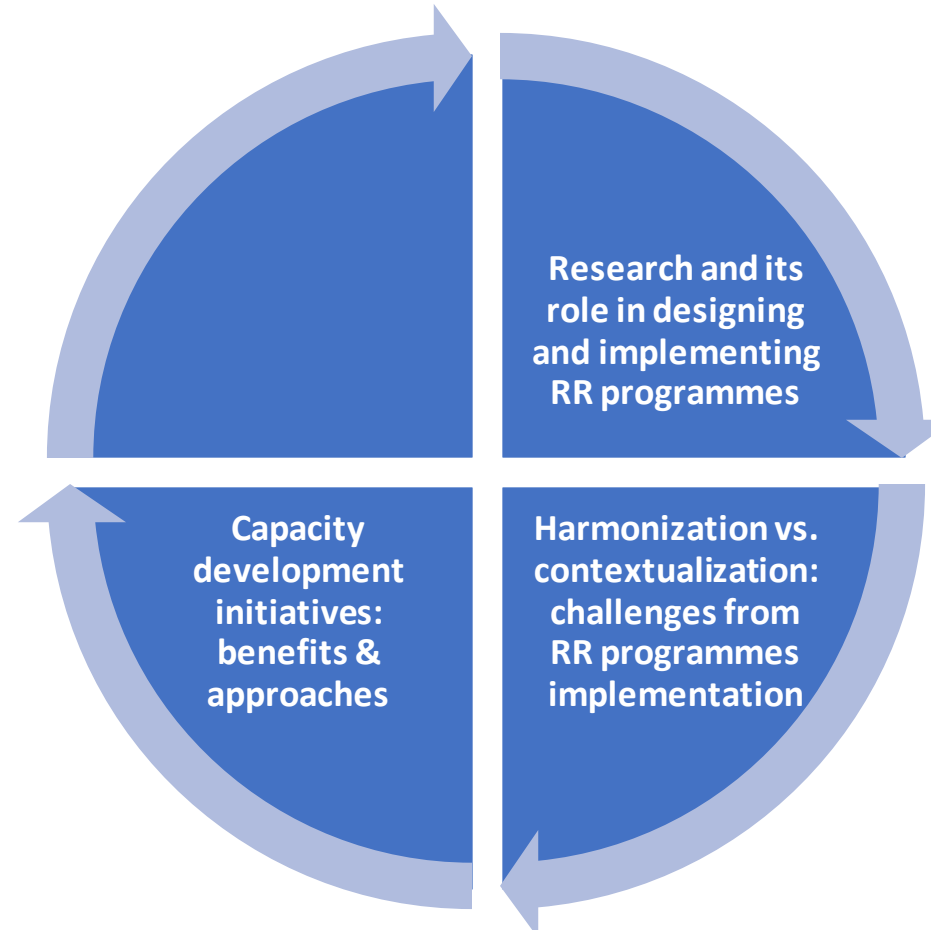
Session 2: KMH legacy: informing future programming

Session 2 : L'héritage du KMH : informer la programmation future



Session 2: KMH legacy: informing future programming

Session 2 : L'héritage du KMH : informer la programmation future



Session 2: KMH legacy: informing future programming

Session 2 : L'héritage du KMH : informer la programmation future



Closing Remarks

Observations finales



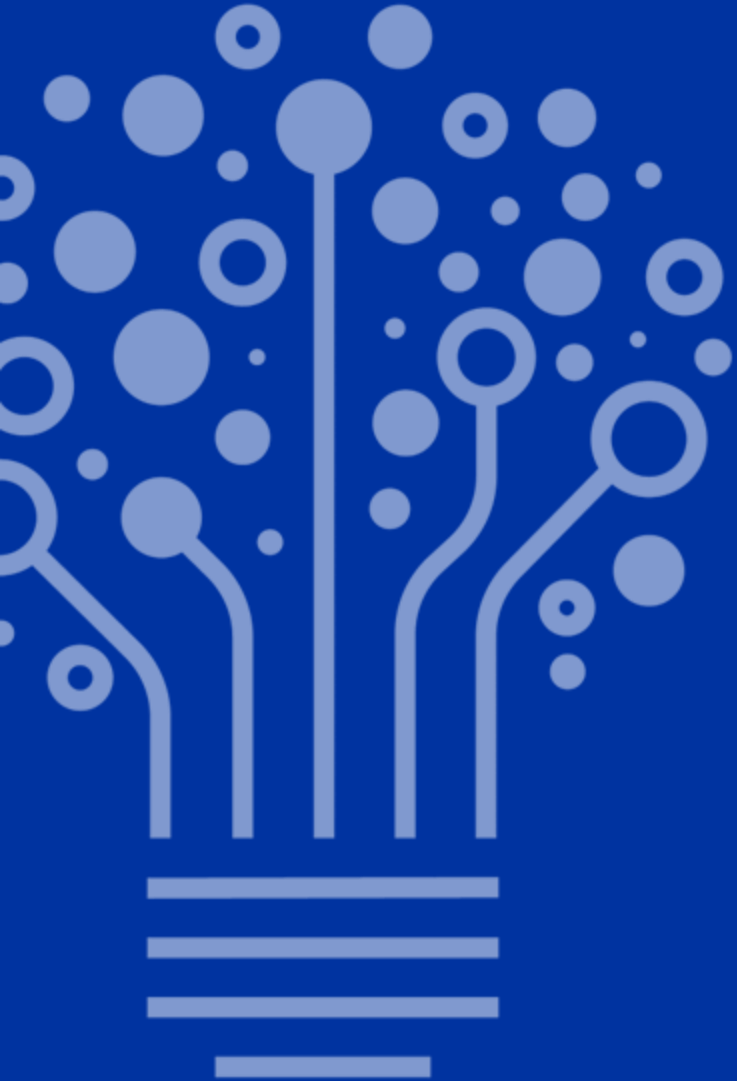
Aleksandra Izydorczyk

Programme Manager, IOM

CONVERSATION GOES ONLINE

La conversation continue en ligne

- ✓ Register the Return and Reintegration Platform's Community!
- ✓ The recordings of this session will be shortly available on the **Seminars** page of the Return and Reintegration Platform: <https://returnandreintegration.iom.int/en/learning/seminars>
- ✓ Do not hesitate to contact us at ReturnReintegrationPlatform@iom.int



Thank you
Merci



Funded by the
European Union



Implemented by
IOM